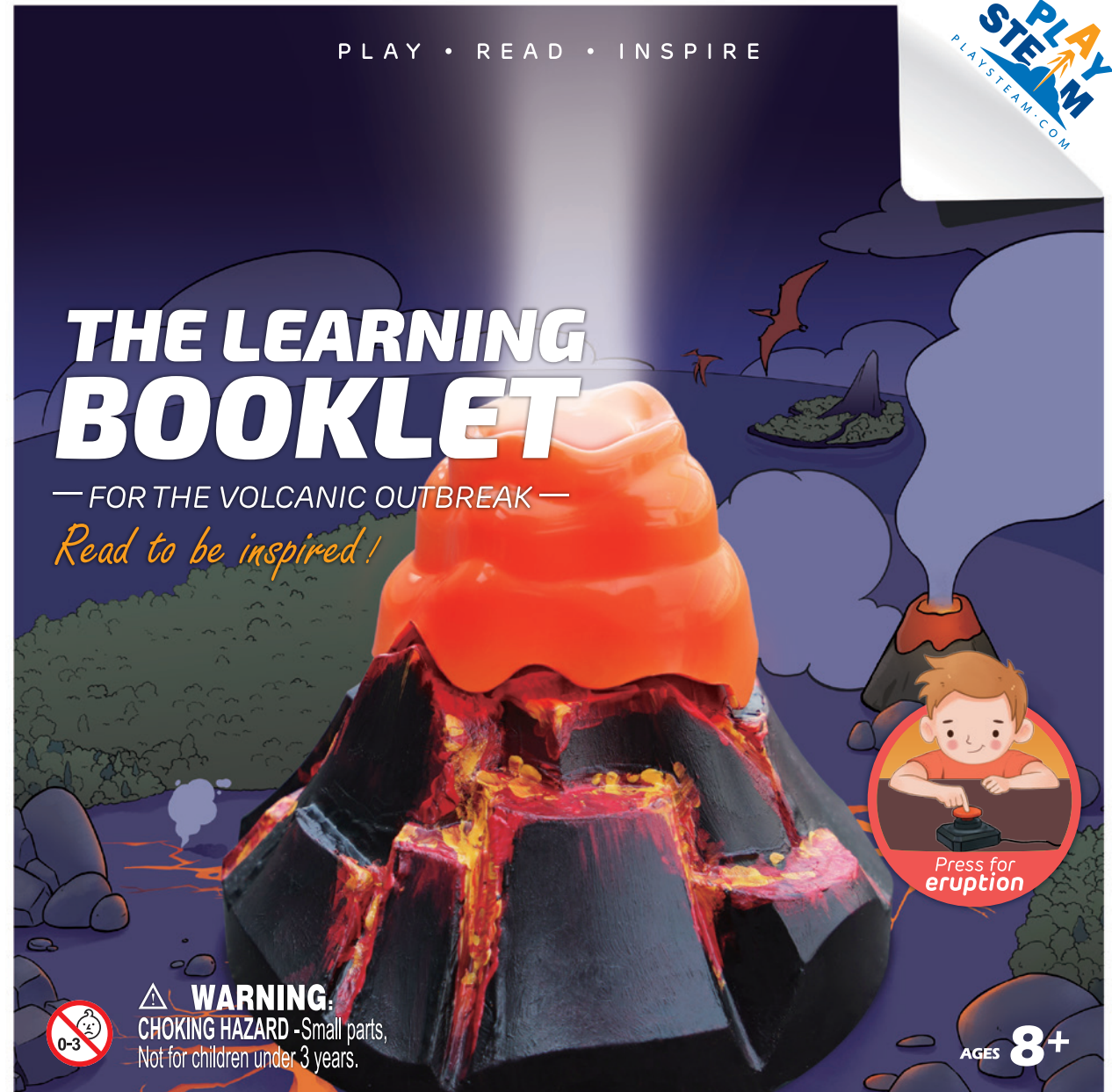





©2017 DESIGNED BY PLAYSTEAM EDUCATION LIMITED, LONDON.  
WEBSITE: WWW.PLAYSTEAM.COM EMAIL: INFO@PLAYSTEAM.COM ADDRESS: SUITE 35 - 36 THE DESIGNWORKS,  
PARK PARADE, LONDON, NW10 4HT. MANUFACTURED BY HANGZHOU ZT MODEL COMPANY LIMITED. ADDRESS: NO 6  
MINGDE RD., PUYAN, BINJIANG, HANGZHOU, CHINA.





## TABLE OF CONTENTS

	Warning Message .....	01
	Package Contents .....	05
	Installation Instructions .....	08
	Fun Facts .....	17

# WARNING MESSAGE

## GENERAL WARNING

*Before you begin, please read through the instructions together with your children. Make sure you understand the safety messages. Please keep the packaging and instructions, as they contain important information.*

*This kit is designed for children over 8 years of age. This product contains small parts which may pose a choking hazard. It is not suitable for children under 3 years old. Please keep individual parts and the fully-assembled product away from children under 3 years of age.*

*Screws and other metal parts may have sharp edges. Children should have adult supervision when assembling the product. Children should have adult supervision when using cutting tools.*

*This kit is intended for indoor use. Water and rain will damage the electronic components.*

*Last but not least, please clean the parts and finished product with a damp cloth. Make sure to remove the batteries from the battery compartment before cleaning. Do not use any soap or cleaning solutions.*

## OTHER WARNINGS

### **Using a screwdriver**

- 1. Please ask parents or another adult permission to use the screwdriver.*
- 2. You must always be supervised by an adult when using the screwdriver. The metal may have sharp edges that can cause injury.*
- 3. Do not throw the screwdriver at other people or animals.*
- 4. Put the screwdriver back in its proper storage place after use.*
- 5. Do not use a screwdriver near children under 3 years of age.*

### **Using batteries**

- Do not charge non-rechargeable batteries.*
- Do not mix different types of batteries or new and used batteries.*
- Insert batteries with correct polarities.*
- Remove exhausted batteries from the toy.*
- Do not short-circuit supply terminals.*
- Remove rechargeable batteries from the toy before charging.*
- Charge rechargeable batteries under adult supervision only.*
- Do not use rechargeable batteries.*

# 1 | WARNING MESSAGE





*Read to be inspired!*

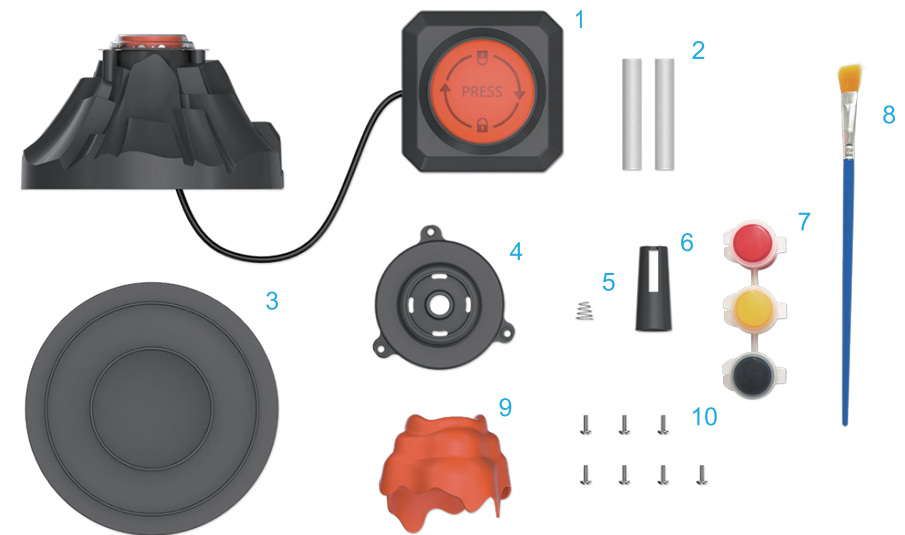




# 2 | PACKAGE CONTENTS



## Package Contents



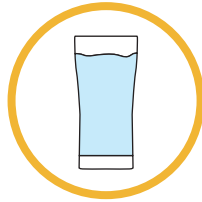
Conforms to ASTM D-4236

Serial	Name	Quantity	Serial	Name	Quantity
1	Volcano module	1	6	Spring holder	1
2	Filter	1+1(spare)	7	Pigment	1
3	Volcano base	1	8	Brush	1
4	Inner component	1	9	Volcano crater	1
5	Spring	1	10	Screws	6+1(spare)

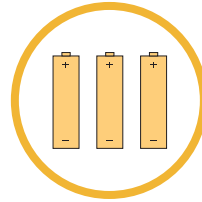
### Required tools



Cross-head screwdriver



Water



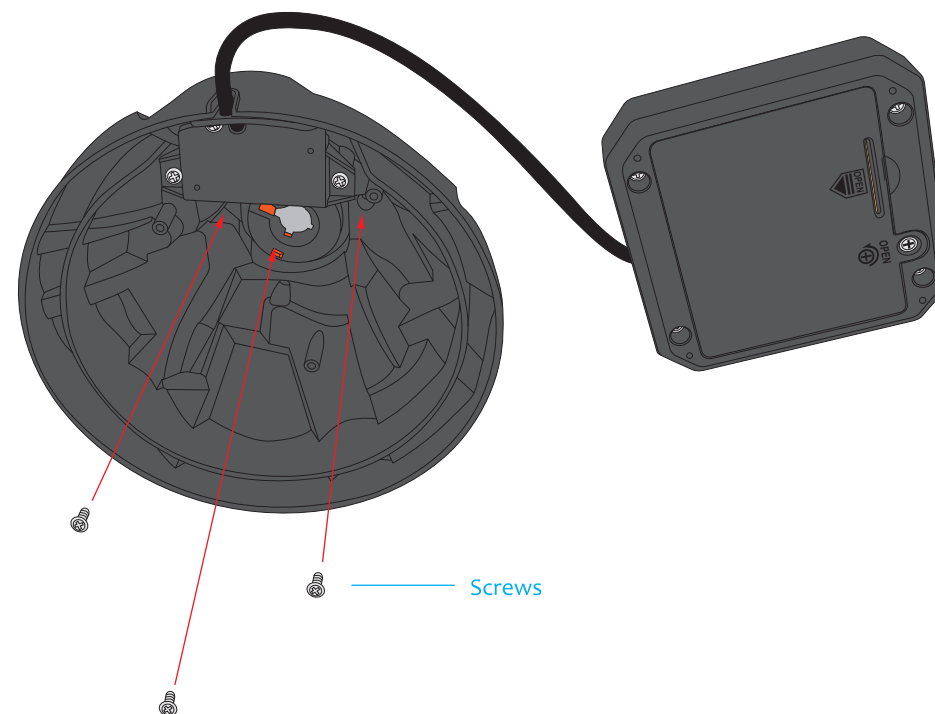
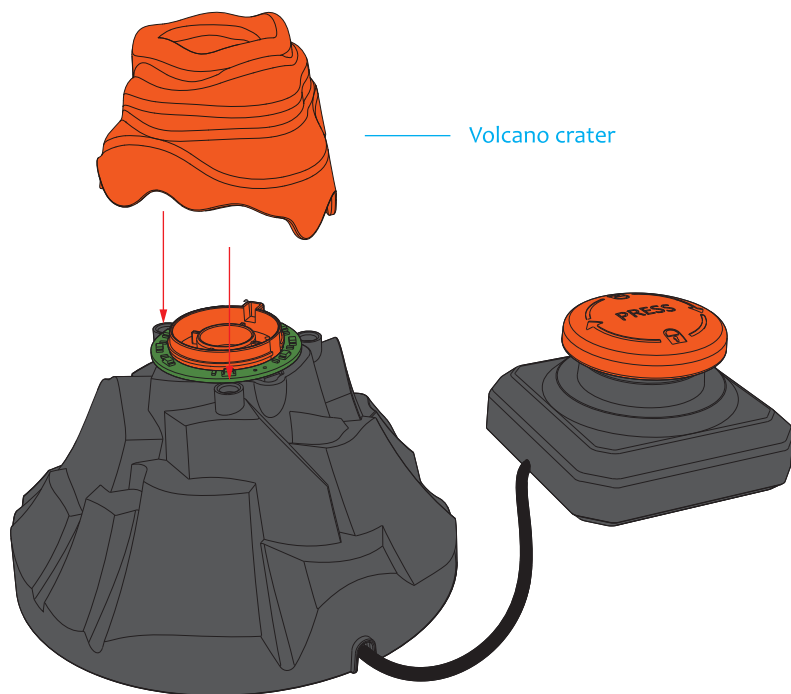
AA batteries (x3)

# 3 | INSTALLATION

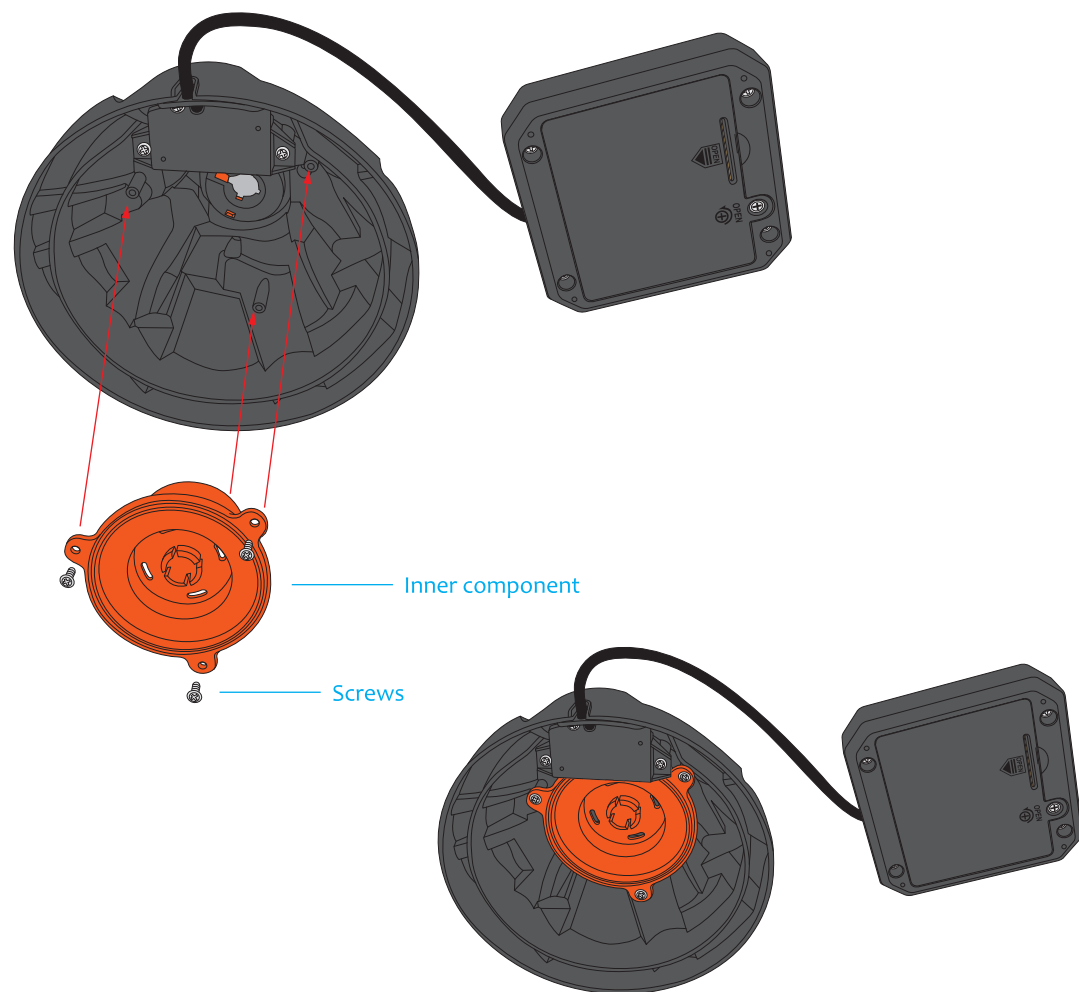


## Installation

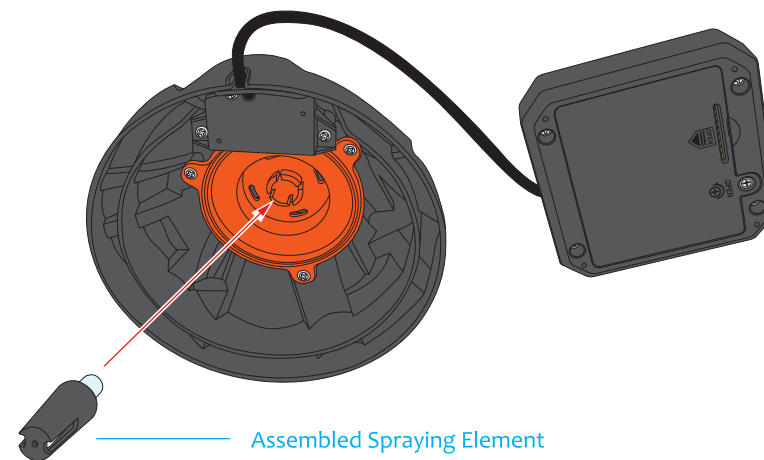
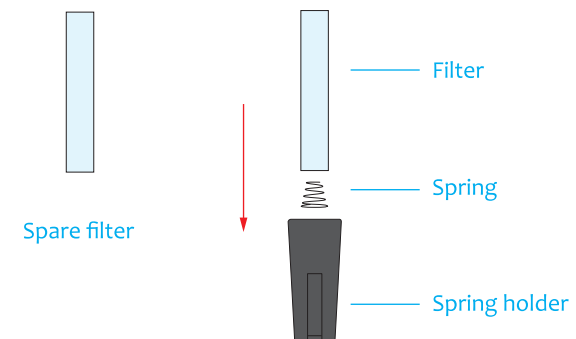
- 1 Attach the volcano crater onto the volcano module. Then, tighten with screws from the inside.



- 2 Insert the inner component into the volcano according to the figure and tighten with screws.

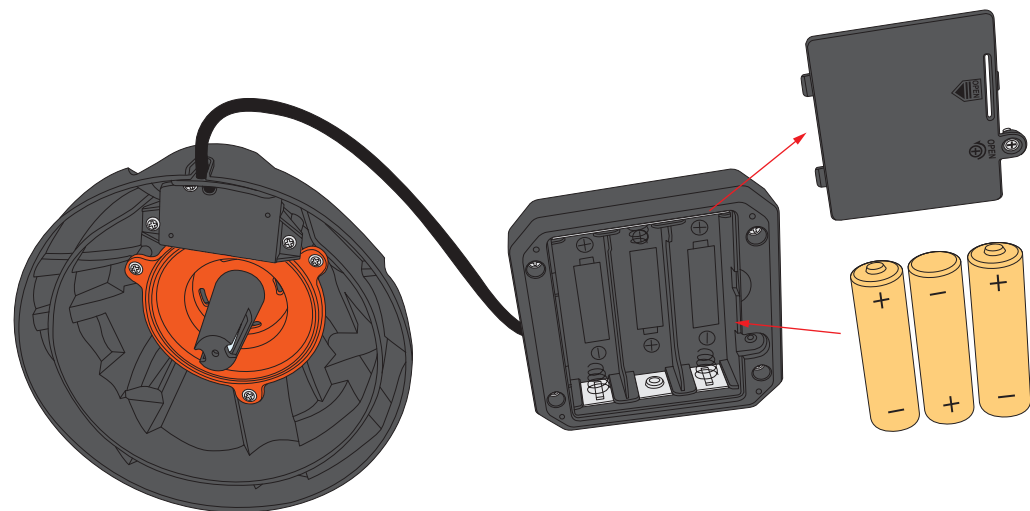


- 3 Assemble the spraying element according to the graphic and insert it into the inner component.

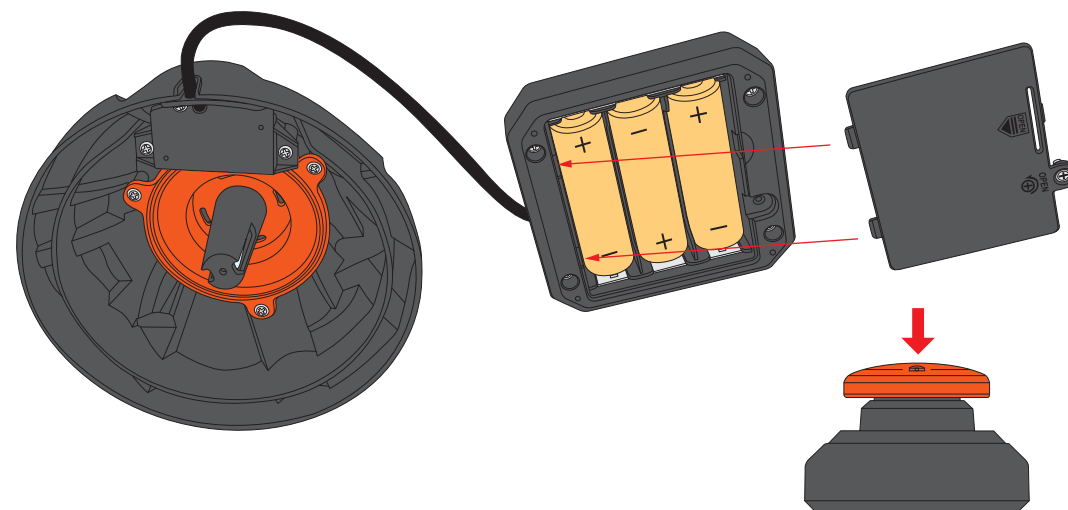




- 4 Remove the battery compartment cover using a screwdriver and install the batteries according to the polarity marks in the battery compartment.



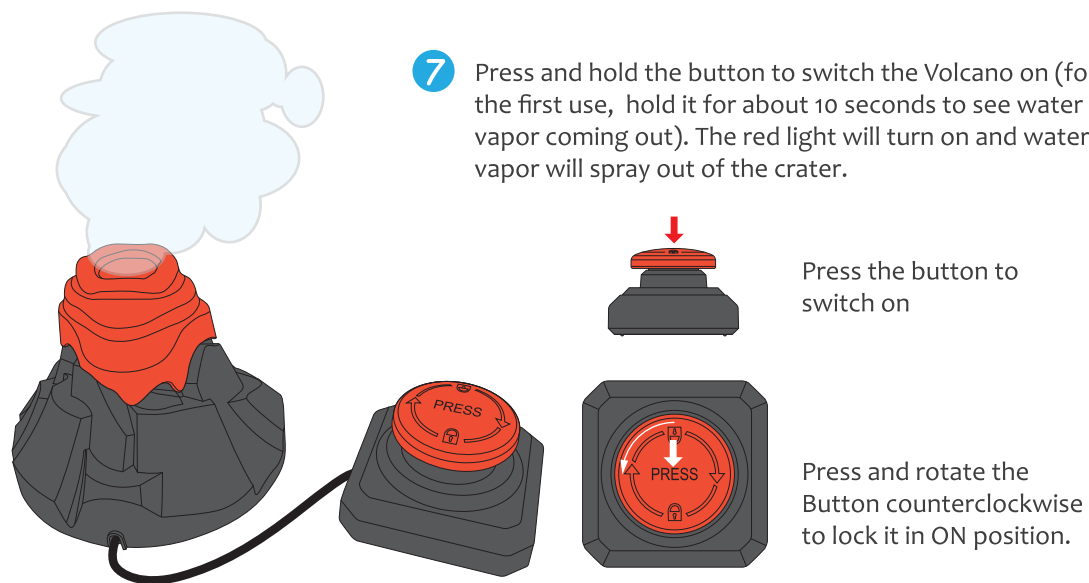
- 5 Assemble the spraying element according to the graphic and insert it into the inner component.



- 6 Pour a proper amount of water in volcano base and cover it with the volcano module.



- 7 Press and hold the button to switch the Volcano on (for the first use, hold it for about 10 seconds to see water vapor coming out). The red light will turn on and water vapor will spray out of the crater.



If no vapour is sprayed from the crater during pressing, ensure that water has been added in the volcano base and that it has not already evaporated.



# **4 | FUN FACTS**

PLAY • READ • INSPIRE

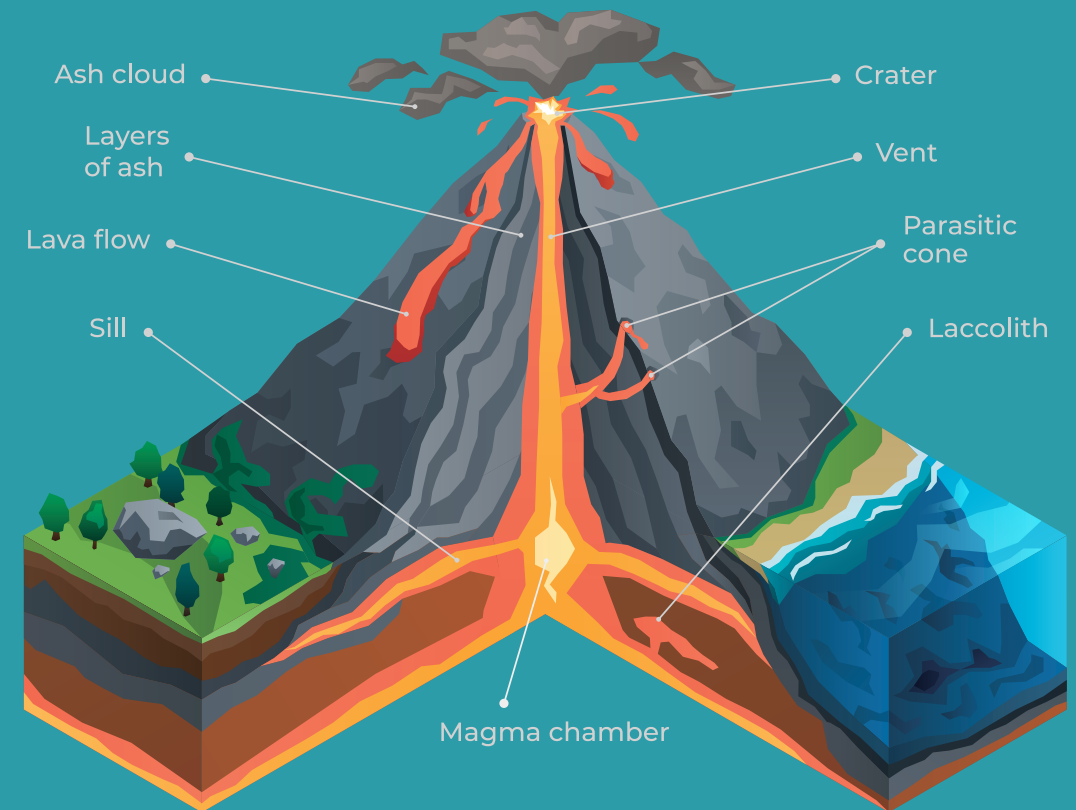


## How does it work?

Water vapour is made of thousands of mini droplets suspended in the air. When you press the button, it sparys all these mini droplets upward. Since they are very light they stay suspended in the air and fly in the wind.

A volcano is a hole in the Earth's "crust" formed by moving "tectonic plates." When it erupts, energy is released from the inside of the earth and some lava, rocks, and water vapor are ejected.

Inside your volcano, energy is given by an "ultra sonic" vibrating plate that allows the water to vaporise and erupt from the crater.







## FUN FACTS 01

There are different kinds of volcanos. Most of them spew lava, extremely hot molten rock, and some also spew dust and rocks and can explode violently.

Did you know that volcano eruptions can create islands? Indeed the Hawaiian islands, in the Pacific, were formed by underwater volcanos a long time ago.

They spewed lava that cooled down and became solid in the water until it created islands.

## FUN FACTS 02

It is now believed that there are two main causes of the dinosaurs' extinction: a collision between Earth and an asteroid combined with strong volcanic activity.







## *Read to be inspired!*

Volcanos can be classified into three categories depending on their activity. An “Active” volcano is a volcano that showing signs of unrest and has erupted during historic times.



## *Read to be inspired!*

A “**dormant**” volcano is one that is not showing any signs of unrest but could become active again.







## *Read to be inspired!*

An “[extinct](#)” volcano is one that erupted long ago – perhaps a million years ago – and most likely will not erupt again.



## *Read to be inspired!*



The highest volcano in our solar system is located on Mars. It is [21 kilometers tall](#), about 2 and half times higher than Mount Everest, and has a width of more than 600 kilometers.



